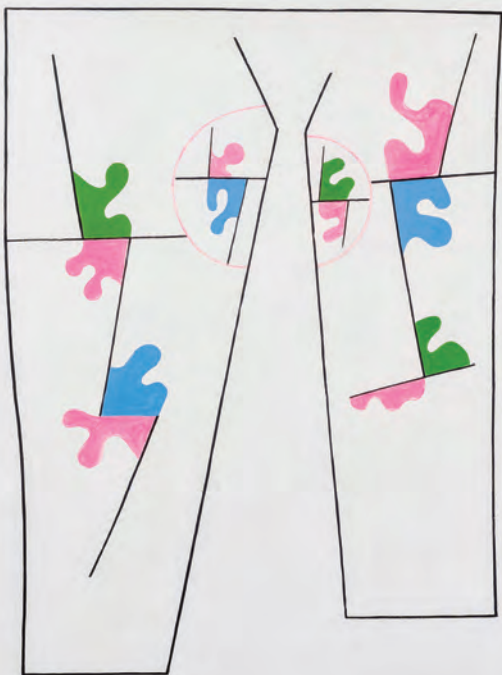


AUTUMN 2020



Chau

TELLING TALES

A lot of what we do in the arts is underpinned by the art of storytelling, whether it's embedded in narrative artworks, or in the way we communicate the stories of art and artists through our exhibitions and events. This has recently come to the fore with our current year-long performance series, *Walking About*, which uses the process of journeying to connect with and share stories associated with the different locations around Tāmaki Makaurau. It has been a beautiful and communal way to get to know our city, and the autumnal cooling of the summer heat bodes well for our upcoming walks.

Another special event detailed in this autumn newsletter is a performance by visiting New York artist, Sarah Cameron Sunde, which will take place in the Manukau Harbour. It is the eighth in a series of nine performances in tidal areas around the world that are designed to generate conversations about water and global concerns for shifting sea levels.

Our major project for this season is *Split Level View Finder: Theo Schoon and New Zealand Art*. This exhibition is developed and toured by City Gallery Wellington, which we're pleased to present in association with the Auckland Arts Festival 2020. The exhibition displays a complex, critical and fascinating story that connects with several key chapters in Aotearoa New Zealand's cultural history in the 20th century, starting with the arrival of a generation of post-war migrant artists and the rise of different craft practices, including right here in Titirangi.

We're also looking forward to the Auckland Art Fair, the annual coming together of artists, galleries and collectors from across Aotearoa and further afield. Te Uru will be there again as part of the Ngātahi collective of Auckland public galleries. Nau mai, haere mai; please visit and say hello.

Ngā mihi nui,

Andrew Clifford
Director | Kaitohu

Split Level View Finder: Theo Schoon and New Zealand Art, City Gallery Wellington, 2019



SPLIT LEVEL VIEW FINDER: THEO SCHOON AND NEW ZEALAND ART

Theo Schoon (1915–85) is a controversial figure. He was born in Java to Dutch parents, and educated back in the Netherlands at the Rotterdam Academy of Fine Arts. He arrived in Aotearoa New Zealand in 1939, where he would become a catalyst for modernism. The first comprehensive exhibition of Schoon's art in decades, *Split Level View Finder* rethinks his legacy for 21st-century Aotearoa.

Schoon was an inquiry-driven artist. He described himself as a 'cat sniffing around in a strange warehouse'. He worked across and between cultures and contexts. Alongside paintings, drawings, and photographs, our exhibition includes prints, ceramics, jade carvings, and carved and decorated gourds.

Schoon was interested in what Māori art might offer modernism. His interaction with Māori art is complex and problematic. What he saw as a form of collaboration now looks like appropriation and cultural presumption.

This exhibition presents Schoon's work as constantly in dialogue or dispute with other cultural forms and artists. He shared his interest in Māori art with Gordon Walters. Their works shared a close, decades-long conversation. In addition to Walters, the exhibition includes works by Rita Angus, Len Castle, A.R.D. Fairburn, Rolfe Hattaway, Dennis Knight Turner, Douglas MacDiarmid, Paratene Matchitt, Selwyn Muru, Arnold Wilson, and Ans Westra.

Split Level View Finder is curated by Dr Damian Skinner and Aaron Lister. The exhibition is supported by the City Gallery Foundation, Auckland Art Gallery Toi o Tamaki, the Schoon Estate, the Chartwell Trust and the Fletcher Trust. It is developed and toured by City Gallery Wellington and presented as part of the Auckland Arts Festival. Skinner's book *Theo Schoon: A Biography* was published in 2018.

7 March – 31 May 2020

Opening function: Saturday 7 March, 4pm

Toured by

**City
Gallery
Wellington**
Te Whare Toi

Exhibition supporters

Foundation

**AUCKLAND
ART GALLERY
TOI O TAMAKI**



THE FLETCHER TRUST

Festival partner

**AUCKLAND
ARTS FESTIVAL**
TE AHUREI TOI O TAMAKI MAKĀURAU

36.5 / Bay of Bengal, Bangladesh, 2017. Photo: Shahrir Shaon



SARAH CAMERON SUNDE 36.5 / A DURATIONAL PERFORMANCE WITH THE SEA

36.5 / A Durational Performance with the Sea is a series of nine performances and video artworks by New York-based interdisciplinary artist Sarah Cameron Sunde, spanning six continents and seven years. In each, Sunde stands in a tidal area for 12-13 hours as water engulfs her body and then reveals it again. It is a radical call to reconsider our relationship with water. This exhibition will feature videos from four locations where Sunde has performed: The Netherlands, Bangladesh, Brazil, and Kenya. Presented by Te Uru and AUT as part of EcoFest West

22 February – 17 May 2020

EVENT: SARAH CAMERON SUNDE, 36.5 / MANUKAU HARBOUR, TĀMAKI MAKĀURAU, AOTEAROA NEW ZEALAND

36.5 / A Durational Performance with the Sea is a series of performances by New York-based artist Sarah Cameron Sunde, spanning six continents. At each site, Sunde stands in a tidal bay for a full tidal cycle to generate conversations about sea-level rise. The eighth work in the series will be created here in the Manukau Harbour. People are encouraged to participate in the research, development and presentation of the project, including supporting the artist as she stands in the water. Presented by Te Uru and AUT as part of EcoFest West.

Sunday 29 March

Manukau Harbour location TBC | Free

walking about
12 months > 12 artists

Andrew McMillan, Echo Eco Echo



We are pleased to announce the third set of *Walking about* performances taking place during Ngahuru/Autumn.

ECHO ECO ECHO

By Andrew McMillan with collaborators.

March 18 – April 13

Te Auaunga/Oakley Creek walkway, Pt Chevalier

STANDING AT THE EDGE

By Melissa Laing. Performed by Mustaq Missouri.

Friday 27 and Saturday 28 March, 7pm

**North West Town Square Westgate and Harbourview-
Orangihina Park, Te Atatu Peninsula**

SPORTS DAY

By Vanessa Crowsley.

Saturday 4 April, 12-4:30 pm

Olympic Park, New Lynn

CRUISING, LAZING, LEANING

By Richard Orjis.

Saturday 18 April, 4:45 for a 5pm start

**Meet at the Circle of Friends Memorial, Te Wai Orea/
Western Springs Park**

MAURIA

By Jeremy Leatinu'u.

Saturday 23 May, 9am for a 9:30am start

Meet at the Waterview reserve, Waterview

For updates, details and times, visit walkingabout.nz

Left - VQ, 2019, oil on linen, Right - OV, 2019, oil on linen



NICOLA FARQUHAR LISTENING, TWITCHING

Nicola Farquhar makes paintings and drawings that examine what it is to be human in a time of ecological crisis. A convergence of vibrant colours and fluid geometric forms result in a new series of paintings that almost vibrate with organic life, microscopically moving between the inner and outer spaces of abstracted feminine forms.

Posing the question of human survival in a changing climate, Farquhar's abstracted female figures are strengthened by their multiplicity. Rich in ambiguity, they shapeshift between the imagined and the biological; the unshaped present and the reformed future of the human body and the natural world.

This exhibition sees Farquhar return to Titirangi to present work that was first developed as an artist in residence at McCahon House in French Bay in late 2018. All works courtesy of Mossman, Wellington.

Nicola will be in the gallery on Saturday 9 May at 2pm to discuss *Listening, twitching* with Te Uru Curator Chloe Geoghegan.

22 February – 17 May 2020

Theo Schoon, *Manchu Diadem*, 1965

EVENT

TALKING WITH THEO

Join us for a day of talks and conversations to celebrate the opening weekend of City Gallery Wellington's touring exhibition, *Split Level View Finder: Theo Schoon and New Zealand Art*, presented for an exclusive showing at Te Uru in association with Auckland Arts Festival 2020. Experts and associates will introduce and unpack the work of controversial artist, Theo Schoon, led by Auckland-based writer and arts advisor, Hamish Coney. Speakers include Dr Rangihiroa Panoho, Justine Olsen, Ron Brownson, Luit Bieringa and Damian Skinner.

Come along for a session or stay for the day. All talks are free, no bookings required. A timetable of all talk sessions will be available online shortly.

Sunday 8 March, 11am–4pm



EVENTS

TALKING WITH THEO

Sunday 8 March, 11am – 4pm

SARAH CAMERON SUNDE: 36.5
/ MANUKAU HARBOUR, TĀMAKI
MAKAURAU, AOTEAROA

Sunday 29 March, all day

GALLERY CONCERT:
KINGSLEY SPARGO

Sunday 5 April, 2pm

AUCKLAND ART FAIR

29 April – 3 May

ARTIST TALK: NICOLA FARQUHAR

Saturday 9 May, 2pm



TERM 2 WORKSHOPS

PRIMARY AND INTERMEDIATE

Miniatures

For this workshop we will look at Hong Kong based artist Yuk King Tan's sculptures that transform found objects, as well as the intriguing Japanese artform of carving miniatures called Netsuke. With a focus on materials, techniques and scale, the students will create miniature sculptures using clay, recycled materials and Plaster of Paris bandages. Workshop can be adapted to suit current school themes.

(Yrs. 3-10, technology, history, maths and visual art strands
DI, CI, PK, UC)

Matariki Kākahu/Cloak

Create a special classroom kākahu learning about the history and significance of traditional Māori cloaks. Students design a unique set of stylised symbols to place inside feather shapes that relate to Matariki. The workshop will combine mixed media techniques as well as a collaborative elements to decorate the borders of the cloak.

(Yrs. 1-8, te reo Māori, social history, technology, and visual art strands DI, CI, PK, UC)

Te Uru and McCahon House Museum tandem visits

Students have the opportunity to view contemporary art at Te Uru followed by a tour of McCahon House in French Bay. With the cottage only a five-minute drive from the gallery, why not visit both at once?

Early Childhood

We now provide gallery visits and workshops tailored to meet the needs of the preschool years. Take a tour of an appropriate exhibition followed by a hands-on workshop in our Learning Centre.

Guided Gallery Visit

View a range of contemporary artworks spread across five unique gallery spaces. Students will be encouraged to interpret different artworks, considering key ideas, materials and techniques.



EDUCATORS ART DEVELOPMENT

Educators Art Development is a series of open, arts-intensive classes designed to up-skill early-childhood through to primary school teachers, as well as other art educators in specialist areas.

Identity Mandala

Create a geometric mandala learning about different types of surface painting techniques while you explore your own identity and culture. We'll combine symbols and text inside geometric shapes to highlight with pastels then sgraffito cold wax and clay tiles to complete. These brightly coloured artworks will focus on colour balance, layering and texture, and how to manage these exciting new media in a classroom environment.

Tuesday 17 March, 5-7pm

Learning Centre | \$25 per session



STUDIO WORKSHOPS

WEEKEND WORKSHOP

Drop In Open Studio: Gourd Prints

Create your own gourd print, inspired by Theo Schoon's intricately carved gourds and the Māori legend of Hine-pu-te-hue, the daughter of Tane and ataua of peace. Start with embossing a foam plate with an outline of a gourd shape to fill with your own designs.

Saturday 21 March, 10am – 3pm

Titirangi Festival, Te Uru Art Jungle

Inspired by the many jungles of the world. Celebrate the diversity of plants, animals and insects and transform into a wild jungle creature. Decorate a mask with bright colours, feathers or streamers complete with dynamic face painting. Make a percussion instrument to decorate with flowering jungle plants and insects.

Saturday 4 April 12-4pm, free family event
central festival site by War Memorial Hall

ADULT STUDIO WORKSHOPS

A Mindful Art Retreat

A unique weekend retreat with Ella Brewer, an expert in traditional Tibetan Art. Ella is also a secondary school painting teacher and has been a practising Buddhist for 25 years. Learn how to draw an authentic Medicine Buddha and new techniques such as a grid method to keep proportions according to tradition. No previous drawing experience is necessary.

25 March 6-7.30pm free talk and introduction

Te Uru Learning Centre | Bookings required

Sat-Sun 18-19 April 10am – 4pm, weekend workshop

\$240 includes all materials, suitable 14 years and over

Inspire Series

Join us for an exclusive evening tour of *Split Level View Finder: Theo Schoon and New Zealand Art* with Te Uru Director Andrew Clifford. Gain a broader perspective of this controversial artist, who worked across printmaking, photography, ceramics, painting, drawing and carving. After the tour, experiment with paints and printing onto a fabric surface developing abstract patterns. Enjoy a glass of wine and nibbles while you get creative.

Tuesday 19 May, 5.30-8pm

\$40 includes everything

Flower Power: Abstraction and Floral Motifs

Join artist and educator Zoe Nash for this 6-week high-energy course that takes inspiration from the natural world. Learn about abstraction and visual communication using floral motifs and nature as a guide. Introduce new skills that explore a range of innovative mark-making, drawing and painting methods, tools and applications. Experimentation is key, pushing the boundaries to discover and develop your own drawing style, which will be actively encouraged.

Friday 15 May – Friday 26 June, 10am – 1pm
(note no class 29 May)

\$250 includes most materials

FOR CHILDREN - AFTER SCHOOL

Tiny Worlds

Over six weeks students will create a stunning mixed media landscape inspired by science fiction and microscopic images from nature. Experiment with ink wash effects combined with paint layering and sponging techniques. Pop-out fantasy insects will be designed, merged with collage to place over the otherworldly landscape.

Wednesdays, 20 May – 24 June, 3.30-5pm

Six sessions \$120 includes materials. Suitable for children aged 7-12 years | Tutor Kinstry Smythe



HOLIDAY PROGRAMME

IMAGINATION STATION

Monday: Paint a mixed media nocturnal forest scene full of weird and wonderful invented plants and insects.

Tuesday: Engrave a foam plate of a mystical creature to print onto an abstracted painted backdrop.

Wednesday: Invent a mythological flying creature using a range of recycled mixed media to cover with plaster of Paris bandages.

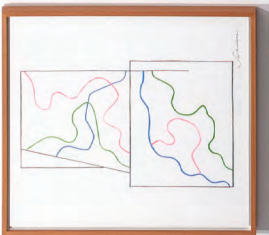
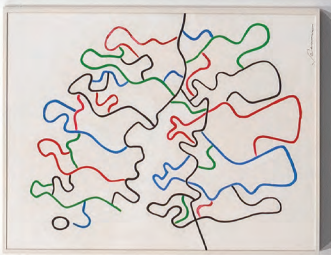
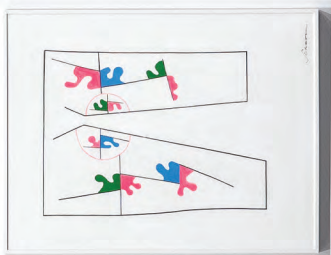
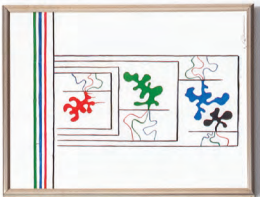
Thursday: Sculpt a dragon head from air drying paper clay to embellish with natural materials and paint.

Friday: Paint and collage a beautiful giant leaf shape to place a larger than life insect within.

Monday 20 – Friday 24 April, 10am – 1pm

\$35 per day, suitable for children aged 5-12 years
all materials supplied

For more information about all of our programmes, visit teuru.org.nz





Lucky Boy, performing on the free music stage. Photo: Lara Gelphi



TITIRANGI FESTIVAL OF MUSIC 2020

This year, the festival has another great free music programme featuring lots of activities for kids and families, with the focus well and truly on local music. Just a few highlights are: The Festival Hub (outside the Memorial Hall) Saturday 4th April 12-6.30pm.

A huge variety of free music on the Main Stage outside the Memorial Hall begins at 12noon with engaging activities for the kids, including 'Hands on Creatures', a Silent Disco (always a hit), face-painting and the annual Te Uru Art Trail. With the Titirangi Library open and running a local music program. Food trucks will be around all day, so this will be a great spot to bring the whanau.

As usual the Festival has a wonderful, diverse and stimulating program of music on offer, with something to interest most musical tastes. From nationally recognised talent such as Hollie Smith and Lord Echo in the Memorial Hall concert series, to a community choir in the library and the Taonga Puoro of Kingsley Spargo in Te Uru.

Come and enjoy our local musical talent.

3-4 April 2020

Full programme and booking information visit:
www.titirangifestival.co.nz

BECOME A MEMBER TODAY

Become a Te Uru member and get more involved with a gallery dedicated to presenting contemporary art through a diverse programme of exhibitions and events.

JOIN TODAY TO RECEIVE THE FOLLOWING BENEFITS

- invitations to exhibition previews and events
- quarterly newsletters
- 10% discount from the Gallery Shop (exclusions apply)
- free entry to the Portage Ceramic Awards competition

NAME

ADDRESS

POSTCODE

PHONE

EMAIL

☐ Please add me to your email newsletter

PLEASE TICK

- | | | | |
|--------------------------------------|-------|---|-------------------------|
| <input type="checkbox"/> Student* | \$20 | <input type="checkbox"/> Senior/Concession* | \$20 |
| <input type="checkbox"/> Individual | \$40 | <input type="checkbox"/> Couple/Family | \$55 |
| <input type="checkbox"/> Life Member | \$500 | <input type="checkbox"/> Make a donation | \$ <input type="text"/> |

*ID CARD NO.

PAYMENT DETAILS

☐ cheque enclosed, payable to Te Uru
or charge my ☐ Visa ☐ Mastercard ☐ AMEX

CARD NUMBER

NAME ON CARD

EXPIRY DATE

CARDHOLDER'S SIGNATURE

Return with payment to Te Uru
PO Box 60109, Titirangi, Auckland 0642

PAY ONLINE teuru.org.nz/index.cfm/support/membership

QUERIES info@teuru.org.nz

Te Uru Waitākere Contemporary Gallery
Incorporated is a registered charity -
CC41215



Contact us

+64 9 817 8087
info@teuru.org.nz

PO Box 60109
Titirangi
Auckland 0642

teuru.org.nz

Visit us

Monday–Sunday
10am to 4.30pm

420 Titirangi Road
Titirangi
Auckland

Closed Christmas Day,
Easter Friday and
ANZAC morning.

Principal
funder



Major
funders



Proudly Managed by Perpetual Guardian

Project
partners



Product
sponsors



Te Uru welcomes diversity. We are committed to manaakitanga and providing a safe environment for everyone. Our Safe Spaces Statement can be found at teuru.org.nz/index.cfm/visit

If you might require any assistance with your visit,
don't hesitate to get in touch.

Te Uru Waitākere Contemporary Gallery
Incorporated is a registered charity CC41215