

WAITAKERE CONTEMPORARY GALLERY



WINTER
2017

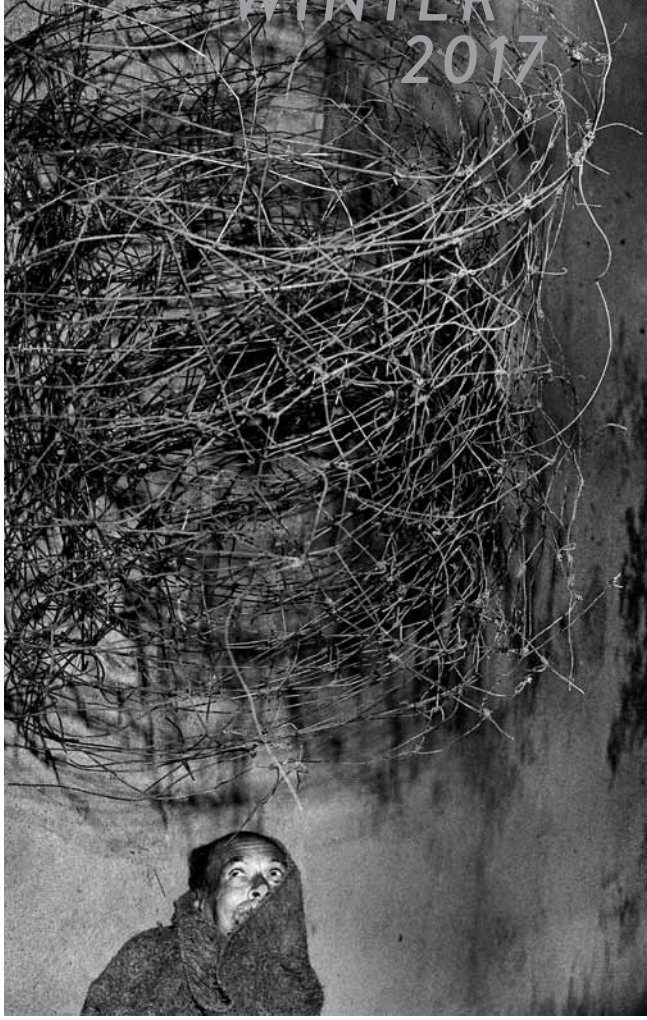


Photo: Suzy Dünser



YUKIHIRO TAGUCHI: POKEPOKE

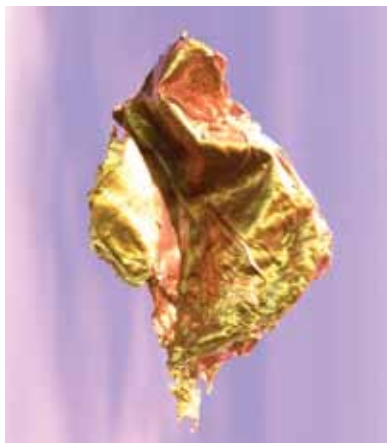
Using everyday materials found in his immediate vicinity, Yukihiro Taguchi creates fleeting formations that are animated through stop-motion techniques. In a constant flux of things becoming and disassembling, he revels in the potential for reinvention, performance and play embedded in any place, and the delight that can come from a familiar or found object acting in an entirely unexpected way.

For the month of April, Taguchi was resident in Tāmaki-makaurau to develop a new work in response to this city. His exhibition takes its cue from a moment when Taguchi expressed that he “met” clay. The legacy of ceramics is strong in West Auckland, from the formative brickworks and crockery manufacturing industries to thriving studio potters’ communities. *Pokepoke* – “to knead” in te reo Māori – indicates Taguchi’s different approach to the locally-resonant medium, working with clay in its plastic, unfired state.

Supported by Chartwell Trust.

22 April – 18 June

André Hemer, *New Tuscan Sunset Scans* 2015



WATCHING WINDOWS

Windows can be a division, a connection or a conduit between realities, channelling daylight into interior spaces or electric light into the darkened landscape outside. In art history, a painting's frame can offer a window to another world, while in our interconnected digital age, screens have become a kind of electronic window that can record or transmit in real time, relaying scenes from one place to another, collapsing distance and connecting timezones of night and day.

In this exhibition, presented amidst the elevated skylscapes of Titirangi and developed in collaboration between artist André Hemer and curator Andrew Clifford, an international network of artists negotiate the physical and digital interplay of light and space as a way to communicate ideas of place – locally, globally and imagined. Their works question the ways we mediate and construct our experiences of the world through image making, where processes of observation and memory can be renegotiated and endlessly reworked or replicated.

Artists: Ry David Bradley (Melbourne/London/New York), Catherine Clayton-Smith (Sydney), André Hemer (Christchurch/Vienna), Biljana Jancic (Sydney) and Céline Struger (Vienna).

29 April – 23 July

Roger Ballen, *Take off*, 2012



ROGER BALLEEN'S *THEATRE OF THE MIND*

Roger Ballen is one of the most important photographers of his generation. He was born in New York in 1950 but has been living and working in South Africa for over 30 years. Over the past thirty years, his distinctive style of photography has evolved using a simple square format in stark and beautiful black and white. In his earlier works his connection to the tradition of documentary photography is clear but through the 1990s he developed a style he describes as 'ballenesque'.

Curated by Colin Rhodes, this touring survey exhibition is Ballen's first solo exhibition in New Zealand. *Roger Ballen's Theatre of the Mind* is a provocative collection of 75

black and white images from the last two decades, and features three videos including the artist's award-winning music video he directed for South African rap-rave group Die Antwoord.

This exhibition was developed by Colin Rhodes at the University of Sydney and toured by Te Uru Waitākere Contemporary Gallery in partnership with Tauranga Art Gallery.

27 May – 20 August

tauranga art gallery
tauranga

auckland
festival of
photography



LONNIE HUTCHINSON AND REUBEN PATERSON

Lonnie Hutchinson (Ngāi Tahu, Samoan) and Reuben Paterson (Ngāi Tūhoe, Ngāti Rangitihi, Scottish) are renowned contemporaries; two artists who have firmly embedded Māori and Polynesian world-views and visual languages into their practices.

Lonnie Hutchinson's practice recalls Māori and Polynesian craft and decorative histories to explore how spaces are defined and distributed, with a particular interest in spaces that occupy a middle ground between time, people and place. Though her work spans disciplines, from architecture to sculpture to digital animation, her most characteristic works are decorative cut outs made from black builders paper.

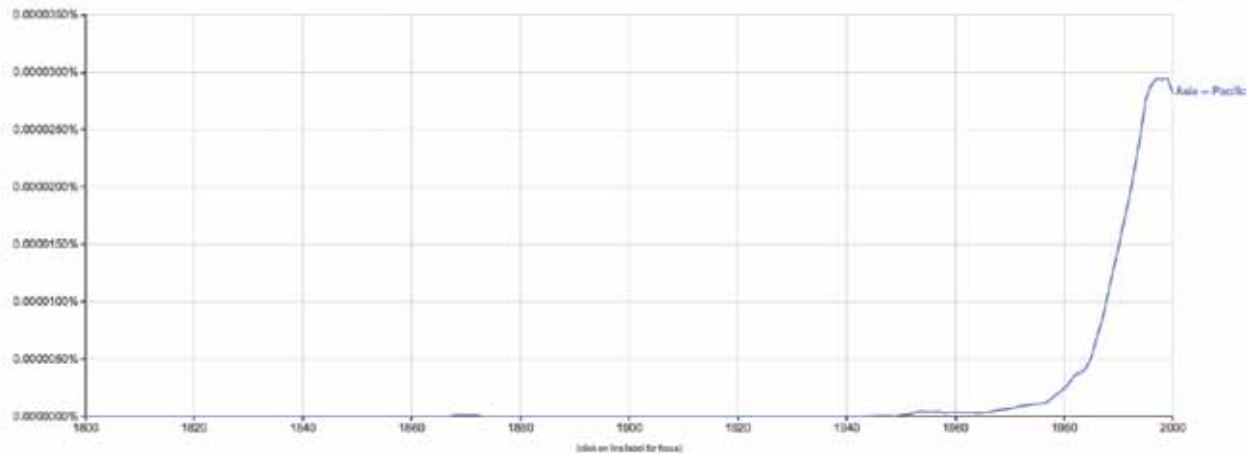
Reuben Paterson's work, from paintings to large-scale public installations, is immediately recognisable for his use of glitter and diamond dust. These materials are deployed by Paterson not just as a playful transformation of recognisable decorative motifs – including kōwhaiwhai patterns, retro floral textile designs, and geometric tessellations – but also a deliberate exploration of glitter's optical potential and the socio-political connotations of sparkly adornment.

This exhibition brings their work together to explore the recurring aesthetic, political and spiritual use of light and darkness that runs through Hutchinson and Paterson's works.

24 June – 20 August

Opening 24 June, 4-6pm

Drag these comma-separated phrases: Asia - Pacific ☐ case-insensitive
 between: 1800 and 2000 from the corpus: with smoothing of: [Show only 1000s](#)



THE ASIA-PACIFIC CENTURY: PART II

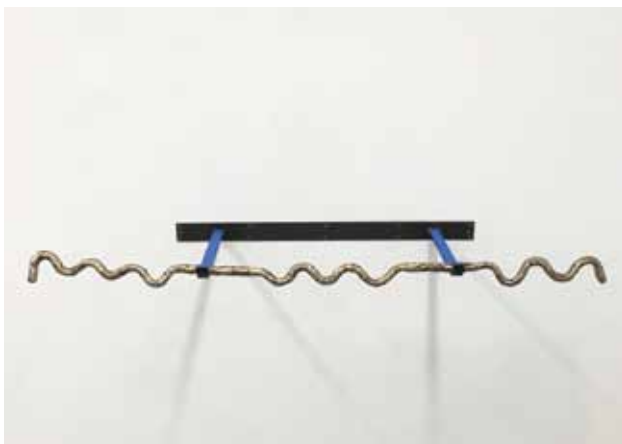
The Asia-Pacific Century is an ongoing project prompted by the growth of Aotearoa New Zealand's Māori, Asian, and Pacific populations, with Statistics New Zealand projecting that these groups are set to collectively make up 52% of the total population in 2038 (up from 35% in 2013). The first phase of the project – held at Enjoy Public Art Gallery in August 2016 – considered 'Asia-Pacific' as a lens to think through our changing national identity.

The Asia Pacific Century: Part Two continues on from these discussions. This iteration takes particular impetus from the context of Auckland, often cited as a 'superdiverse' metropolitan city. Because questions of how we might visualise an 'Asia-Pacific Century' require

multiple responses from different perspectives, part two of *The Asia-Pacific Century* will function at Te Uru as an open research hub, featuring contributions from invited participants who have all previously been engaged with issues of identity, immigration and indigeneity within an Aotearoa New Zealand context.

Curated by Emma Ng, Ioana Gordon-Smith

29 July – 1 October



SMALL SPACE: WINTER

Small Space follows on from the Curiosity Cabinet programme at Lopdell House Gallery and the Curiosity Corner programme at Te Uru. Using the landing of the floating staircase behind Gallery One, the space is dedicated to and supports contemporary jewellery and object-making practices.

Chris Charteris & Emily Siddell: Aspects of Glass

Chris Charteris and Emily Siddell collaborate on large scale jewellery works, exploring different qualities of glass, both with the very familiar shapes of recycled wine bottles and the most ancient and natural form of glass, obsidian.

7 June – 24 July

Hannah Valentine: Flex

Tactile bronze forms lay at rest as potential sites of action, identifying the significance of feeling, touching and exerting in today's climate of digital saturation.

28 July – 14 September



EVENTS

SENIOR MOMENTS

On the first Wednesday of every month, gallery staff give a free exhibition tour for older enthusiasts who enjoy a chat about art.

Wednesday 7 June, 5 July, 2 August, 11am

SQUIGGLA - FREE FAMILY EVENT

Squiggle is a creative learning application, developed by the Chartwell Trust for users of all ages to promote creativity and critical thinking through the exploration of mark-making. Squiggling is a type of free-form line drawing, like doodling, where you can just pick up a pencil and let your instinct and imagination take over. For this drop-in workshop, we invite families to view our exhibition *Pokepoke* from Yukihiro Taguchi, a playful exhibition about clay. Then join us in the learning centre to work on a collaborative mark-making painting with clay and learn how to load your drawing on to Squiggle.

Supported by the Chartwell Trust.

Saturday, June 10, 1-3pm

Learning Centre Gallery



TERM 3 WORKSHOPS

PRIMARY AND INTERMEDIATE

Forest imprints

We will explore contemporary artwork by Christine Hellyar, who is inspired by the forests of the Waitakere Ranges, 18th century history, and colonial artefacts shipped to Aotearoa during that period. We'll think about how Hellyar uses colour, texture, and composition to produce captivating works of art, then we'll learn how to integrate some of these processes into our own artwork. The finished crayon/dye/cold wax paintings will make a stunning forest mural back in your classroom. (Yrs. 1-8, art, English, science and social history)

Fabric Stories

In this fun workshop, you'll discover the joy of creating your own story and illustrations. Invent or select your favourite book character to illustrate onto special fabric. You will map out ideas using chalk, then layer coatings of oil pastels to build up tones, and finish with tinted wools and sequins as collage. We will learn about line, composition and textural mark making. Compose a creative story based on your character as a post-visit activity. Join the flags together to make a colourful installation back in your classroom. (Yrs. 1-8, English and art)

Bookings and further information

09 8178087 X 204 or education@teuru.org.nz

Teachers preview for intermediate and high schools

Come and see what Te Uru and McCahon House have to offer while viewing some amazing artworks. Enjoy a complimentary glass of wine and nibbles while you find out what's in store with exhibitions and workshops in 2017. Each attending school will receive a free copy of *Len Castle - Making the Molecules Dance* valued at \$90.

Tuesday 27 June, 5-6.30pm

RSVP to education@teuru.org.nz by 22 June

Guided gallery visit

View a range of contemporary artworks spread across five unique gallery spaces. Students will be encouraged to interpret different artworks, considering key ideas, materials and techniques.

Te Uru and McCahon House Museum tandem visits

Students have the opportunity to view contemporary art at Te Uru followed by a tour of McCahon House in French Bay. With the cottage only a five-minute drive from the gallery, why not visit both at once?

EARLY CHILDHOOD

We now provide gallery visits and workshops tailored to meet the needs of the preschool years. Take a tour of an appropriate exhibition followed by a hands-on workshop in our Learning Centre.

Bookings

09 8178087 X 204 or education@teuru.org.nz



EDUCATORS ART DEVELOPMENT

Educators Art Development is a series of open, arts-intensive classes designed to assist in the up-skilling of early childhood through to primary school teachers, as well as other art educators in specialist areas. The aim of these workshops is to help you engage with your students in a more confident exploration of the arts.

Introduction to plaster

This workshop will give you the basic skills to create plaster casts of found objects and see the potential of making very quick relief sculptures using simple materials. The process is a lot of fun and you can obtain very detailed, intricate results. You will also learn about plaster of paris bandages and how you can incorporate these into mixed media works of art. Please bring along a few small items to cast, such as shells, seed pods, children's toys etc.

Tuesday 12 September, 5-7pm

Learning Centre

\$25 per session

Bookings

09 8178087 X 201 or info@teuru.org.nz

STUDIO WORKSHOPS

FOR ADULTS

We now offer art workshops for adults during the day, providing a place to experiment and test a range of different media in a creative, supportive environment.

Traces

This class offers you innovative ways of working with paper, card, plaster, and unfired clay to create a series of unique sculptural forms inspired by museum collections. Emphasis will be on integrating different media together to create a small installation of works to display together.

Fridays 10am – 1pm, 28 July – 25 August

Five sessions \$150 includes most materials

Tutor Iona Matheson

Weekend workshop: Portrait Drawing

Join award-winning artist Zarahn Southon, a talented portrait artist with years of tutoring experience, in a fun and informative investigation of portraiture. Over two days, you will draw from a life model, learning about proportion, tone, structure and light. Explore past portraiture traditions while discovering more about contemporary styles and approaches. The workshop is designed for all levels, with an emphasis on creating a resolved portrait.

17-18 June, 10am – 4pm

\$220 includes life model fee and some materials

Bookings

8178087 x 201 or info@teuru.org.nz

FOR CHILDREN - AFTER SCHOOL

Mini Museums Endangered Animals

Join our exciting after-school workshop series for children. Over six weeks, students will develop drawing and 3D sculpting techniques to assemble a unique mixed-media pop-out collection inspired by endangered animals. We will focus on form, scale and colour balance to create a wall-mounted panel in the manner of museum displays.

Thursdays 3.30–5pm, 17 August – 21 September

Six sessions \$120 includes materials. Suitable for children aged 6-12 years | Tutor Jodi Meadows



HOLIDAY PROGRAMME

DREAM WORLDS

Monday: Draw and collage a concertina book with a magical panoramic story.

Tuesday: Create a mixed media, underwater coral garden and castle using iridescent watercolors.

Wednesday: Sculpt a fairy-tale tree using clay, plaster and dried plant specimens.

Thursday: Make a genie lamp from air-dry clay embedding precious gems to place onto a mystical painted backdrop.

Friday: Paint an enchanted, surreal landscape on canvas using acrylic washes, pastels and collage.

10–14 July, 10am – 1pm

Learning Centre

\$35 per day, suitable for children aged 6-12 years, all materials supplied

FOR 5 & 6 YEAR OLDS

Tuesday 18 July: Create a mixed media, underwater coral garden and castle using iridescent watercolors.

Thursday 20 July: Make a genie lamp from air-dry clay, embedding precious gems to place onto a mystical painted backdrop.

Bookings

8178087 x 201 or info@teuru.org.nz

FREE FAMILY ACTIVITIES

Visit our Learning Centre Gallery on level 3 for exhibitions and family activities that change on a regular basis. Be sure to ask at reception for a copy of our family gallery trail to enhance your visit.

Project Kai

Kelston Girls' College presents a photographic still-life exhibition that reflects the students' interpretations of what food means to them. Throughout this project, these students have worked with numerous artists. SaVAge K'lub founder Rosanna Raymond ran a word workshop that assisted in the writing of their brief and 'The Creative Souls Project' supported some of the students in the creation of their still life arrangements. Finally, the students worked alongside photographer Desmond Burdon, learning how to photograph their work in context. The result is a diverse range of work that celebrates individuality and culture.

Free drop-in activity:

Sketch your favourite food onto a paper plate to take home. Think about how best to present the food items together, just like the beautiful photographs in the *Project Kai* exhibition.

6 May – 9 July

Connect

Zeal, located in Henderson, is a youth organisation that believes every young person is creative. Over nine weeks, their creative arts students studied SLR camera techniques and design editing tools while also exploring how connections with their friends, family, the whenua (land and ocean), culture and community affect their wellbeing. This culminating exhibition presents the students' photographs and their visual interpretation of what 'connection' means to them. www.zeal.nz

15 July – 3 September





Oliver Perkins



MCCAHOH HOUSE NEWS

This autumn/winter, the McCahon House Trust welcomes painter Oliver Perkins to Parehuia - the McCahon House Artist's Residency.

Perkins' intensive studio based practice is in continuous dynamic dialogue with the form and history of painting. His paintings hover between a declaration of formal intent and material process. It is this opposition that he exploits to draw the viewer into a conversation of edge, surface and object. His practice is reductive and often monochromatic, and he describes his works as "physical models that explicitly, and self reflectively, reveal the process and mechanics of production." Yet the tension between representational space and relational concerns allow for a porous intersection to be established, navigated and negated.

Perkins studied at Christchurch School of Art and Design before being awarded the Tanz Scholarship in 2005, which saw him complete his MA with distinction at the prestigious Chelsea College of Art in London. His work is held in leading collections worldwide including Chartwell Trust Collection, Auckland Art Gallery Toi o Tamaki, University of the Arts Collection (London), Saatchi Gallery (London) and Zabludowicz Collection (London). Perkins is represented by Hopkinson Mossman.

House Museum Hours:

Wednesday–Sunday, 1–4pm (closed public holidays)
Office: 09 817 7200 | www.mccahonhouse.org.nz

BECOME A MEMBER TODAY

Become a Te Uru member and get more involved with a gallery dedicated to presenting contemporary art through a diverse programme of exhibitions and events.

JOIN TODAY TO RECEIVE THE FOLLOWING BENEFITS

- invitations to exhibition previews and events
- quarterly newsletters
- 10% discount from the Gallery Shop (excludes magazines and cards)
- free entry to the Portage Ceramic Awards competition

NAME (MR/MRS/MS)

ADDRESS

POSTCODE

PHONE

EMAIL

☐ Please add me to your email newsletter

PLEASE TICK

- | | | | |
|--------------------------------------|-------|---|------|
| <input type="checkbox"/> Student* | \$20 | <input type="checkbox"/> Senior/Concession* | \$20 |
| <input type="checkbox"/> Individual | \$40 | <input type="checkbox"/> Couple/Family | \$55 |
| <input type="checkbox"/> Life Member | \$500 | | |

*ID CARD NO.

PAYMENT DETAILS

☐ cheque enclosed, payable to Te Uru
or charge my ☐ Visa ☐ Mastercard ☐ AMEX

CARD NUMBER

NAME ON CARD

EXPIRY DATE

CARDHOLDER'S SIGNATURE

Return with payment to Te Uru
PO Box 60109, Titirangi, Auckland 0642

PAY ONLINE teuru.org.nz/index.cfm/support/membership

QUERIES info@teuru.org.nz

Te Uru Waitakere Contemporary Gallery
Incorporated is a registered charity -
CC41215



Contact us

+64 9 817 8087
info@teuru.org.nz

PO Box 60109
Titirangi
Auckland 0642

teuru.org.nz

Visit us

Monday–Sunday
10am to 4.30pm

420 Titirangi Road
Titirangi
Auckland

Closed Christmas Day,
Easter Friday and
ANZAC morning.



Te Uru Waitakere Contemporary Gallery
Incorporated is a registered charity -
CC41215