

WAYNE YOULE: ELEVATION

Wayne Youle presents *Elevation*, an exhibition of new work made during his studio residency at McCahon House in 2019. Spilling out from the Learning Centre Gallery into Te Uru's stairwell, *Elevation* is anchored by a large sculpture that cuts across the centre of the gallery. This is based on the famously open-air children's bunkroom underneath the McCahon cottage and brings an imagined section of McCahon House into the gallery. Throughout this exhibition, Youle mixes history with design and sculpture, demonstrating a deep engagement with the McCahon legacy.

Canterbury-based artist Wayne Youle (Ngāpuhi, Ngāti Whakaeke, Ngāti Pākehā) creates aesthetically diverse work rooted in concepts of whānau and whakapapa. His bicultural heritage is reflected in his work, which often addresses issues of identity, race and the commodification of cultural symbols. Wayne Youle's work has been shown in national museums and public galleries throughout New Zealand and overseas.

26 September – 29 November 2020



JAMES CHARLTON: THROWN

Testing the limits of interactive art, James Charlton's *THROWN* is a major new installation to experience this spring. A series of free-standing mechanical structures will populate the gallery like strange sporting equipment, programmed and loaded with hundreds of tennis balls, ready to be released into the air and collected by a team of voluntary human agents.

THROWN challenges visitors to think of their own position within the exhibition as they stand in the designated strike zone and dodge flying tennis balls. This exhibition will throw your sense of what art is, and ask, are you, the audience, participant, performer, or object?

The exhibition also includes Charlton's recent video work *Catch 32 Bit*, and a new sculpture, *Deuce*, both further questioning the nature of art objects. *Deuce* is a 3D printed action-based form created from gestures made with virtual reality modelling, a technique that we'll explore in an upcoming workshop – keep an eye on our website for details.

3 October – 29 November 2020

WAITĀKERE CONTEMPORARY GALLERY

SPRING
2020



Joyce Campbell, still from *Flightdream II* 2016, digital video installation, colour, sound, 30 mins



On the Last Afternoon: Disrupted Ecologies and the Work of Joyce Campbell

The first substantial presentation of artist Joyce Campbell's photo- and media-based practice, *On the Last Afternoon* was held at the Adam Art Gallery Te Pātaka Toi in 2019. The exhibition was originally developed in dialogue with the architecture of the Adam Art Gallery, and will be re-staged within Te Uru's similarly unique gallery environment this Spring. Rather than a conventional survey, the artist describes the exhibition as 'a meditation on the interdependence of physical systems'. *On the Last Afternoon* unfolds as a forcefield of relations between photography, philosophy, ecology, material history, science fiction, and the care and reading of sacred and symbolic landscapes, that have evolved over the course of her near three-decade career.

Raised in Wairoa on the east coast of the North Island and now based in Auckland and Karekare, Campbell spent a decade in Los Angeles, Southern California. She is drawn to and has negotiated extreme conditions: the wild places of rural New Zealand; the desiccated, smog-choked hinterlands of California; the icy vastness of Antarctica; and the ocean's coral reefs and imagined depths. Shifting scale from the microscopic to the global, she uses a wide spectrum of techniques from photography's two-hundred-year history to give visible form to the beauty, complexity and sheer perseverance of life under threat.

The exhibition is accompanied by a fully-illustrated 320-page publication, co-published by Adam Art Gallery and Sternberg Press – available to purchase from our shop.

19 September – 22 November 2020

Cover image: Joyce Campbell, *The Last Afternoon* (detail), 2014, Radiographic film, 178 x 432mm. Courtesy of Two Rooms, Auckland, Bartley + Company Art, Wellington, and Nadene Milne Gallery, Arrowtown and Christchurch.

Te Adam
Pātaka Art
Toi Gallery



CREATIVE ARTS
AND INDUSTRIES

Contact us

+64 9 817 8087
info@teuru.org.nz
PO Box 60109
Titirangi
Auckland 0642
teuru.org.nz

Visit us

Tuesday–Sunday
10am to 4.30pm

420 Titirangi Road
Titirangi
Auckland

Closed Christmas Day,
Easter Friday and
ANZAC morning.

Principal
funder



Major
funders



Project
partners



Product
sponsors



Te Uru welcomes diversity. We are committed to manaakitanga and providing a safe environment for everyone. Our Safe Spaces Statement can be found at teuru.org.nz/index.cfm/visit

If you might require any assistance with your visit,
don't hesitate to get in touch.

Te Uru Waitākere Contemporary Gallery
Incorporated is a registered charity CC41215



About walking is a contemporary art series that explores the relationship between walking and art. We are pleased to announce the Kōanga/Spring 2020 *About walking* performances:

Christina Houghton: Wayfinding Waikumete

Christina Houghton leads a guided walk navigating the urban environment of Glen Eden. Follow the subtle signs that locate us while noticing the seasonal markers. This walk moves through Glen Eden towards Waikumete Stream.

Saturday 10 October, 11am

Jeremy Leatinu'u: Mauria

Mauria is the second walking project presented by Jeremy Leatinu'u that invites participants to traverse the urban landscape of Ōwairaka. The name, *Mauria*, translates as 'to take' or 'to carry'. Participants are asked to bring a small packet of plant seeds or seedlings which will be carried during the journey.

Saturday 31 October, 12 noon

Richard Orjis: cruising, lazing, leaning

Drawing on queer histories of cruising for intimate encounters in parks, artist Richard Orjis invites you to gather by the Waters of the Eel, Te Wai Orea / Western Springs Park for a night time cruise. Together we will explore how passive, promiscuous, temporary and transient modes may lead to meaningful alliances and intimacies between humans and the more-than-human.

Saturday 21 November, 9pm

aboutwalking.nz



TERM 4 WORKSHOPS

PRIMARY AND INTERMEDIATE

We now have three different workshops on offer, some of which include our new initiatives *Art in a bag* and *Art in a box*. Option One: A tour at Te Uru followed by a hands-on workshop in our Learning Centre. Option Two: Our educators visit you with our new *Art in a box* lesson designed to be delivered in your classroom. Option Three: Our educators send you our new *Art in a bag*, complete with comprehensive lesson plan and materials, so you can facilitate an interactive workshop in your classroom, straight from the gallery.

We also offer tandem visits with our nearest and most interesting cultural facilities and education providers: McCahon House, Arataki Visitors Centre and Te Toi Uku – Crown Lynn and Clayworks Museum.

Botanical studies

With specialist media, we will view Joyce Campbell's beautiful botanical photographs, then create a unique mixed media artwork. We'll combine botanical ink wash studies with relief prints then finish with collage. (Yrs. 1-8, science, social history, technology, and visual art strands DI, CI, PK, UC)

Clay play

Make a Crown Lynn swan or a mini clay cup using air-drying clay. We will learn basic hand building skills to craft a 3D clay sculpture. For an extended option we can offer

a tandem visit to Te Toi Uku in New Lynn to learn more about the history of Crown Lynn ceramics, a short drive from Te Uru. (Yrs. 1-8, science, social history, technology, and visual art strands DI, CI, PK, UC)

Matariki kākahu/cloak

Create a special kākahu for your class, learning about the history and significance of traditional Māori cloaks. Students will design a unique set of stylised symbols to place inside triangular feather shapes. The workshop will combine mixed media techniques as well as a collaborative element to decorate the edges of the cloak. (Yrs. 1-8, te reo Māori, social history, technology, and visual art strands DI, CI, PK, UC)

Early childhood

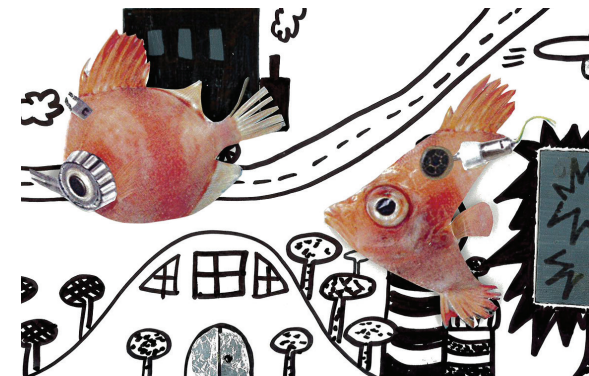
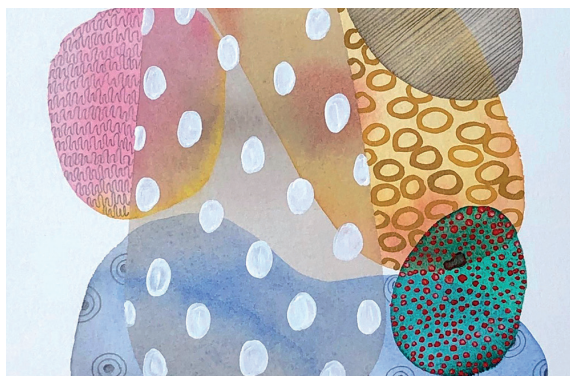
We now provide gallery visits and workshops tailored to meet the needs of pre-schoolers. Take a tour of an appropriate exhibition followed by a hands-on workshop in our Learning Centre.

Guided gallery visits

View a range of contemporary artworks spread across five unique gallery spaces. Students will be encouraged to interpret different artworks, considering key ideas, materials and techniques.

Bookings and further information

09 817 8087 X 204 or education@teuru.org.nz



STUDIO WORKSHOPS

Nature in art with Zoe Nash

A course that takes inspiration from the natural world aimed at those with a passion for plants. You'll work with real-life specimens and a wide range of dry and wet mixed media using both traditional and more innovative techniques to celebrate a myriad of plant life.

Fridays, 30 October – 4 December, 10am – 1pm

\$220 includes most materials, suitable for adults

Creative outbursts

Nurture your creative potential with our brand new workshop series, designed especially for adults to encourage experimentation with a diverse range of media in a safe and inspiring environment. From sketching in the gallery, to ink wash studies and 3D media and gallery tours, you'll have the chance to get inspired and further develop your creative skill base.

Fridays, 23 October – 3 December, 1.30-3pm

\$150 includes all materials, suitable for beginners

FOR CHILDREN – AFTER SCHOOL

Mixed media delights

Creative afterschool workshops that explore new media with an experimental approach. Over the term we'll sketch in the gallery, paint, photograph, collage, and more, while learning new techniques and enjoying a range of diverse processes.

Tuesdays, 27 October – 15 December, 3.30-4.30pm

Eight sessions, \$120 includes all materials, suitable 7-12 years

EDUCATORS ART DEVELOPMENT

Educators art development is a series of open, arts-intensive classes designed to up-skill early-childhood through to primary school teachers, as well as other art educators in specialist areas.

SQUIGGLA – bringing arts back into the classroom

Squiggla is a programme to exercise the creative mind through mark making. We will demonstrate ways to get into joyful mark making, to share and collaborate, record and upload Squigglaworks using Squiggla.org. Suited all ages, teachers can take Squiggla back to their classrooms. Bring a digital device, mark making materials supplied. Presented by Karen Gardiner (a Chartwell Trustee and intermediate teacher) and Sue Gardiner (also from the Chartwell Trust), who are co-developers of Squiggla.

Thursday, 29 October, 5-7pm

Learning Centre | \$25 per session

INSPIRE SERIES

Join us for an exclusive evening tour of Joyce Campbell's latest exhibition with our Curator Chloe Geoghegan. Gain a broader perspective of Campbell's practice, then create a mixed media botanical artwork. Enjoy a glass of wine and nibbles while you get creative.

20 October, 5.30-8pm

\$40 includes everything

Bookings and further information for all classes

09 817 8087 X 201 or info@teuru.org.nz

HOLIDAY PROGRAMMES

FUTURE PRESENT PAST

Monday: Create a textured moonscape using modelling compound, clay slip, sand and Indian Ink, then complete with a pop-out moon buggy, moon hotel or rocket!

Tuesday: Invent a futuristic city with collaged robotic creatures to roam around a magnetic backdrop.

Wednesday: Paint a surreal self-portrait of how you would like to look using a combination of mixed media.

Thursday: Sculpt an Egyptian-inspired canopic jar using clay combined with plaster of Paris bandages.

Friday: Design ancient symbols and treasures to place within an Egyptian papyrus-like scroll.

5-9 October, 10am – 1pm

\$35 per day includes all materials

Suitable for ages 6-12 years

CURIOUS TAMARIKI TITIRANGI

Day One: Film making and editing techniques, working alongside professional filmmakers. **Day Two:** Weaving, bush survival skills, cooking over a fire with Riki Bennett and Kelly King. **Day Three:** Starting to create your own film through sharing your stories, knowledge and feelings about the environment.

30 September – 2 October, 10am – 4pm

Free | Suitable for ages 12-18 years

Please register at www.curiousamariki.com/register

or contact us at us@curiousamariki.com